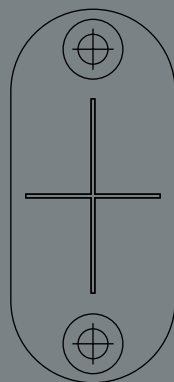


# Flush Magnets

Technical documentation



# Specifications and installation

For use with System M+

The Flush Magnets consists of a set of two strong magnets. These will be installed in the bottom side of the pivot door and in the wall or door next to it. The Flush Magnets strengthens the 0° position of every pivot door, no matter its size or weight. This makes sure that the pivot door is always perfectly in line with the wall or door next to it. A seamless connection, completely 'flush'.

The Flush Magnets is suitable for pivot doors that are already placed but also for pivot doors that are not placed yet. A minimalistic design: the hidden perfection you can expect from FritsJurgens.

- Seamless connection of the pivot door
- Suitable for new and existing situations
- Minimalistic design: hidden perfection
- Perfectly closed pivot doors at 0°

# Components

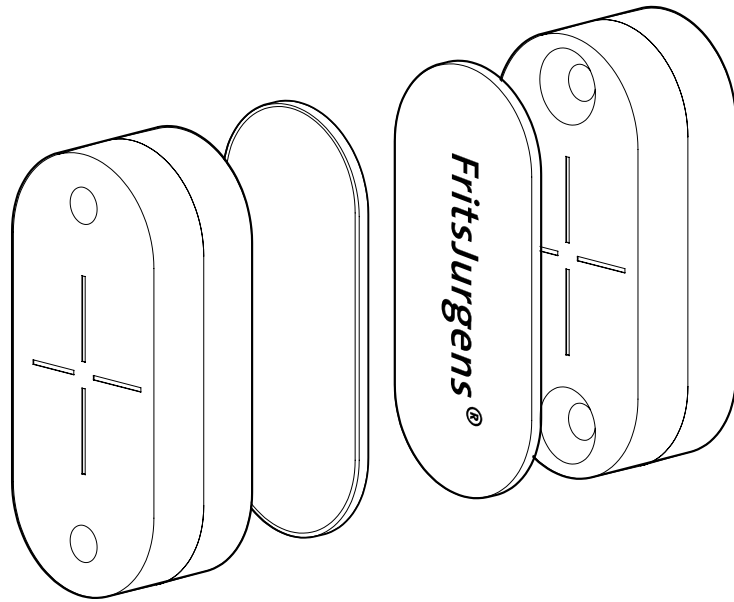
---

## Products included

- Set of two magnets
- Set of two stainless steel or black cover plates

## Optional

Forstner Drill Bit  
Ø22 mm, with clamping ring  
TO.Flush



# Available colours

---

## Stainless steel

MT.Mag.SS

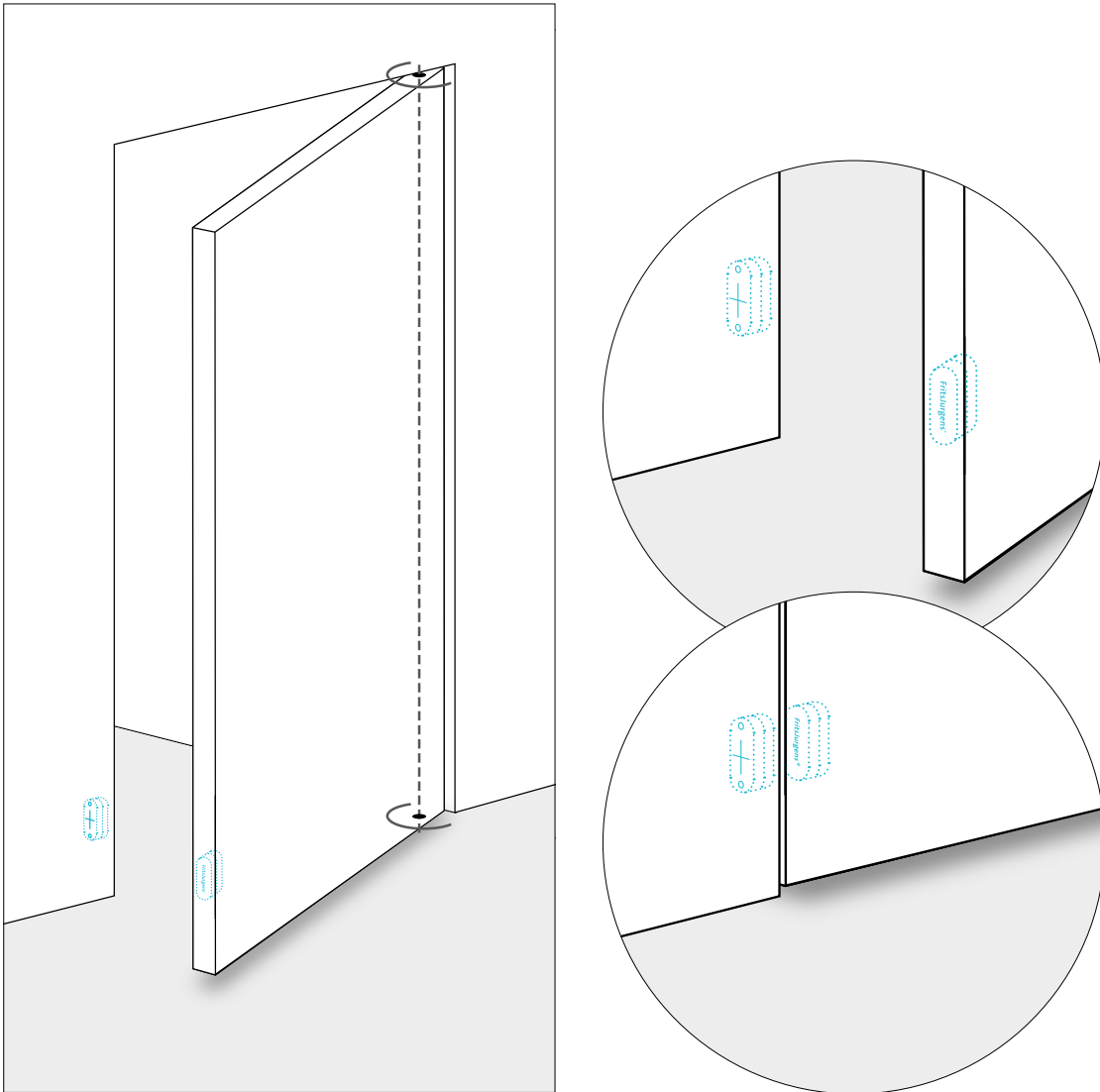
## Black

MT.Mag.BK



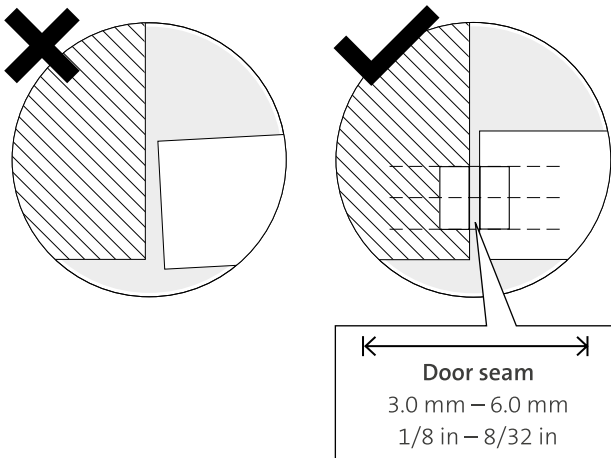
## Flush Magnets mounted in the door

---

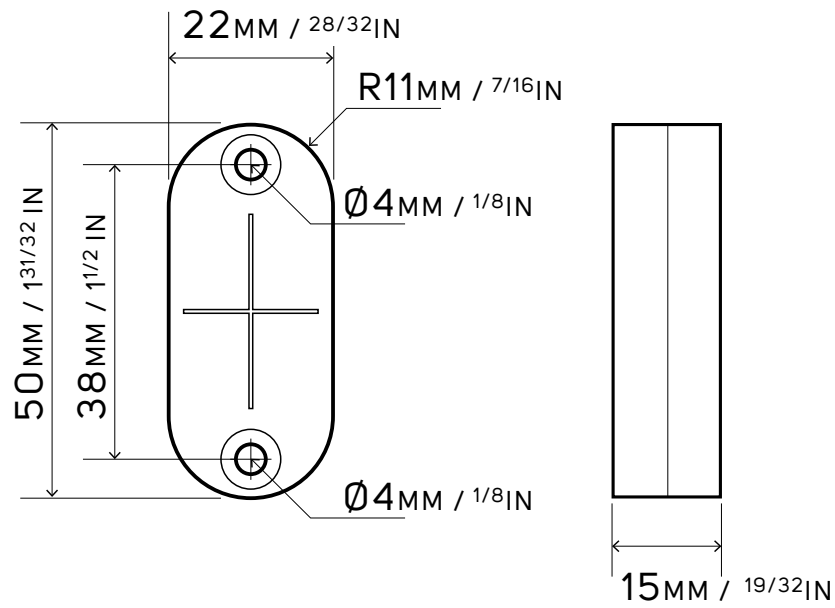


## Seamless connection

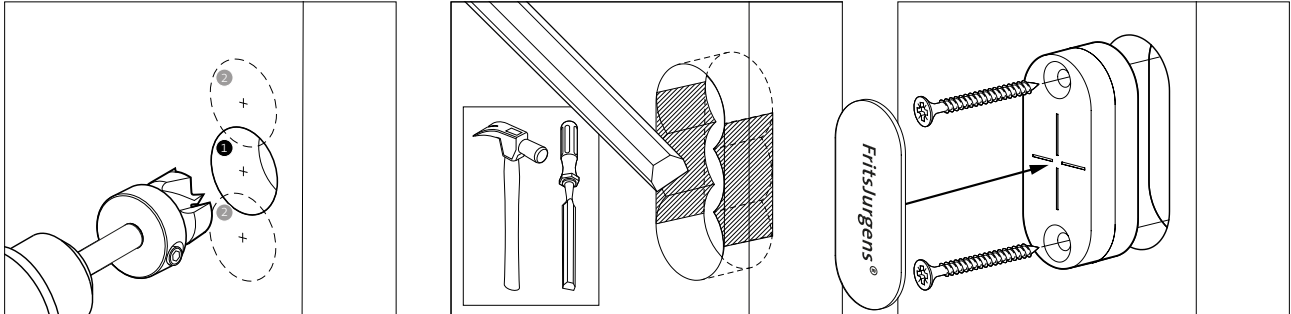
---



# Technical drawing Scale 1:1



## Installation



**Recommended to use**  
Forstner Drill Bit, Ø22 mm  
TO.Flush

(Can be ordered optional)

**FritsJurgens International**

A. Einsteinlaan 1  
9615 TE Kolham  
The Netherlands  
+31 598 343 410  
info@fritsjurgens.com

**FritsJurgens Middle East & Asia**

Building A3 Unit 516/517  
Dubai South  
Dubai  
United Arab Emirates  
+971 4 575 8493  
dubai@fritsjurgens.com

**FritsJurgens North America**

228 East 45th Street, Suite 9E  
New York, NY 10017  
United States  
+1 800 597 4961  
northamerica@fritsjurgens.com

fritsjurgens.com

**FritsJurgens®**