



FritsJurgens[®]

TOP PIVOT REVERSED
TECHNICAL DATA SHEET

FROM THE NETHERLANDS, FRITSJURGENS CREATES PIVOT HARDWARE SOLUTIONS OF THE HIGHEST POSSIBLE QUALITY THAT EXCEED INDUSTRY STANDARDS AND OUR CLIENT'S EXPECTATIONS. THESE SOLUTIONS ENABLE ENDLESS PIVOT DOOR DESIGN POSSIBILITIES.

- | | |
|--------------------------|--|
| Hidden hardware | Only small floor and ceiling plates are visible. All the hardware is hidden in the door. |
| Unlimited design | The door can be of any height and made with every type of material, creating unlimited design possibilities. |
| Motion technology | Motion technology puts hydraulic power to use, creating a smooth and controlled door movement. |
| Timeless quality | Built from high-performance materials, the systems are maintenance-free and perform flawlessly. |

CONTINUOUS IMPROVEMENT

FritsJurgens strives for the best quality possible. Every system that leaves the FritsJurgens headquarters is designed, fabricated, and tested with the greatest attention to detail and with only the best quality materials. This enabled us to create maintenance-free hinges: even after 136 years of daily use, the hinge will still function flawlessly.

WORLDWIDE NETWORK

Architects, designers, and door manufacturers worldwide work with FritsJurgens. Our pivot hinges are available through a trusted partner-network in 80+ countries.

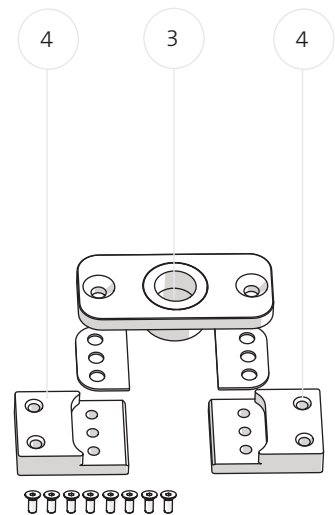
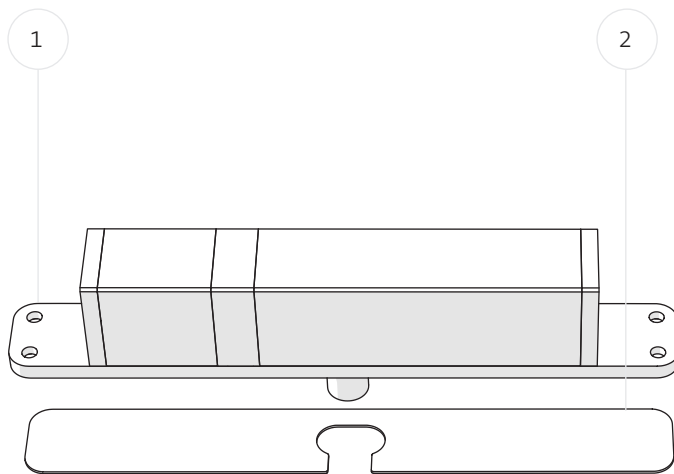


OVERVIEW

This top pivot is slightly different from all the others: Top pivot Reversed can be placed in the head jamb or ceiling. As a result, extra thin door frames can be used because no system needs to be incorporated in the top of the door. For example, you can opt for an extra-large glass opening. Thanks to its placement in the ceiling, this system is not adjusted from the side of the door, but from inside the door opening.

COMPONENTS

- 1 Top pivot Reversed
- 2 Cover plate
- 3 Receiver
- 4 Adapters with filler plates (optional)



Exterior pivot doors

When installing an exterior door, there's always a head jamb where the top pivot Reversed can be installed in.

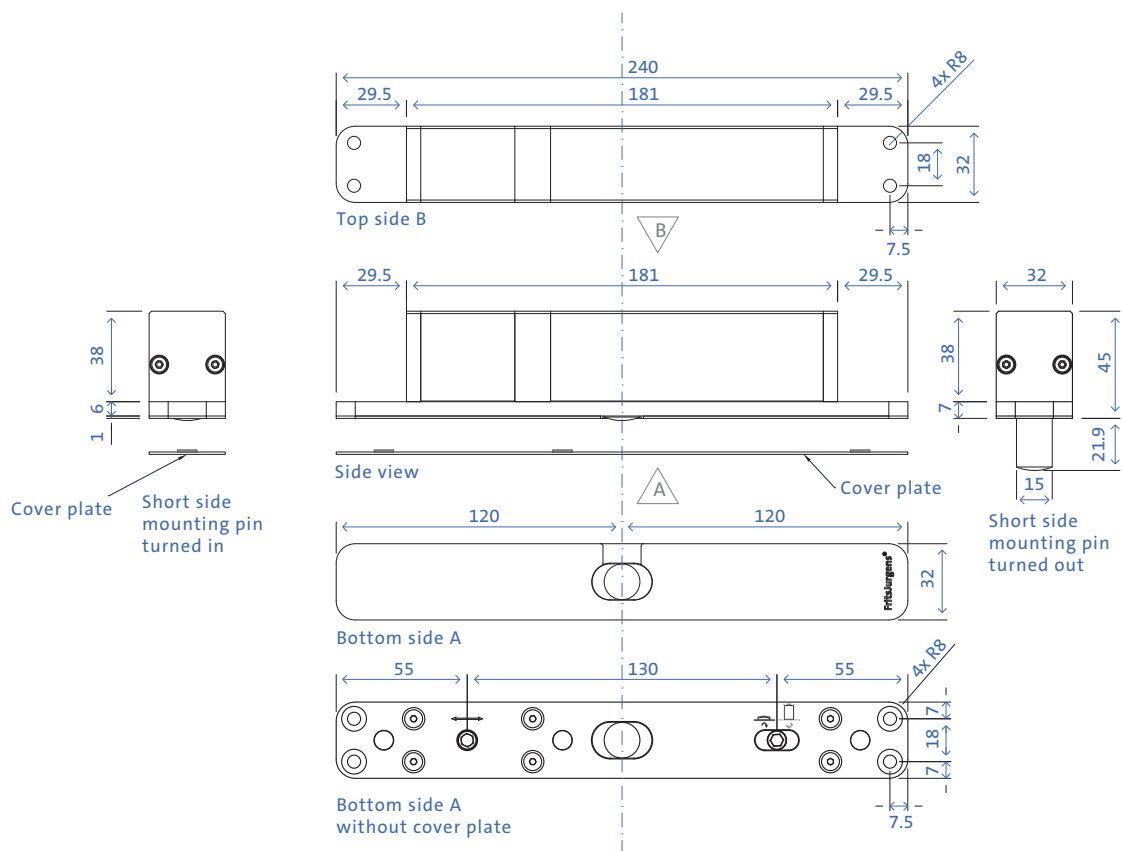
Smaller frames, more glass

With the top pivot installed in the head jamb or ceiling you can design a pivot door with smaller frames and a larger glass opening.

Easy installing

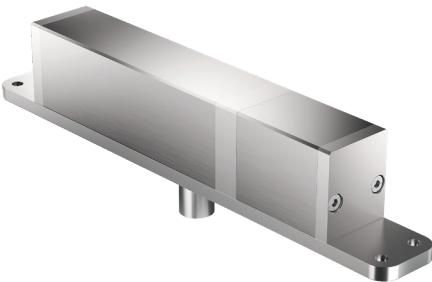
Thanks to its placement in the head jamb or ceiling, this system is adjusted from inside the door opening: convenient for middle placement.

TECHNICAL SPECIFICATION



FEATURES	TOP PIVOT REVERSED
Pivot position	Variable from 130 mm
Placement type	Side and middle placement
Top pivot placement	Top jamb
Adjustment	From inside the door opening
Suitable for	System One, System 3, System M & System M+
Cover plates	Yes

Cover plate finish	Stainless steel Black White
--------------------	-----------------------------------

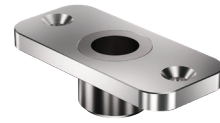


COVERS

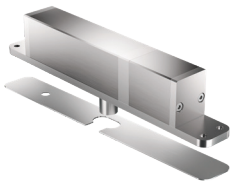
Receiver

FOR TOP PIVOT REVERSED

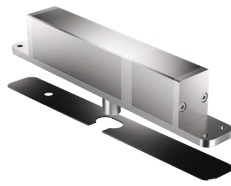
When ordering the top pivot Reversed, a rectangular Receiver is included in the set. The Receiver is mounted inside the top of the pivot door. The pin of the top pivot Reversed is rotated downwards into the Receiver during the installation.



Cover plates



SS
Stainless steel



BK
Black

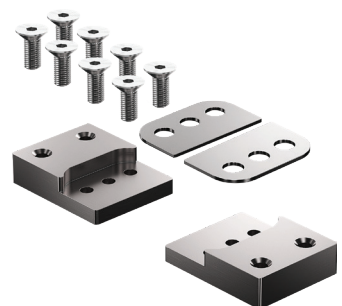


WT
White

ACCESSORIES

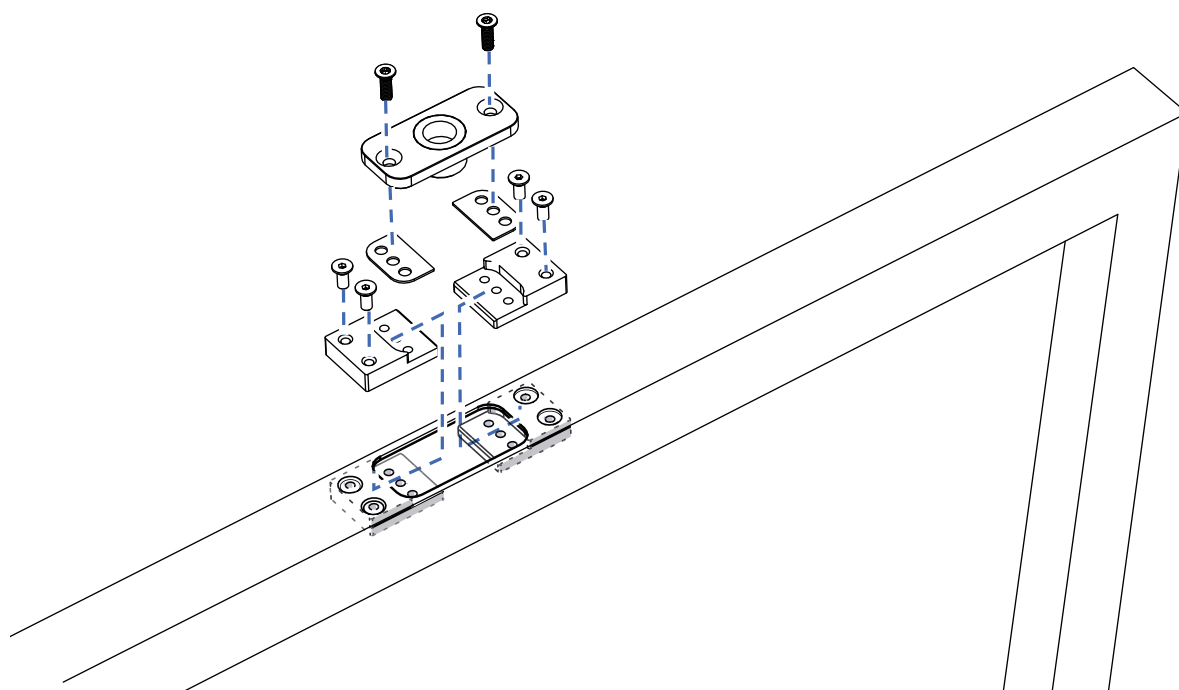
Adapters

The Adapters can be used to mount the components in a metal profile. The two Adapters are mounted in the profile first. They then offer a solid base to mount the component on. We currently offer Adapters for 2 mm thick profiles only. This product is compatible with the Receiver, all top pivots, and with bottom pivots System One and System 3.

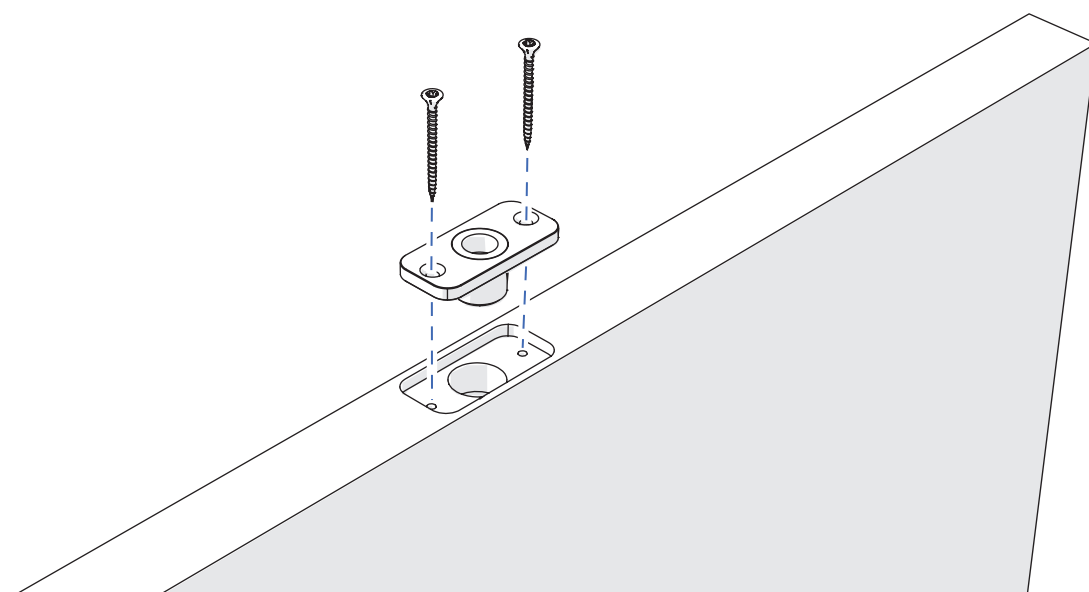


MILLING INSTRUCTIONS

For steel or aluminium profile doors

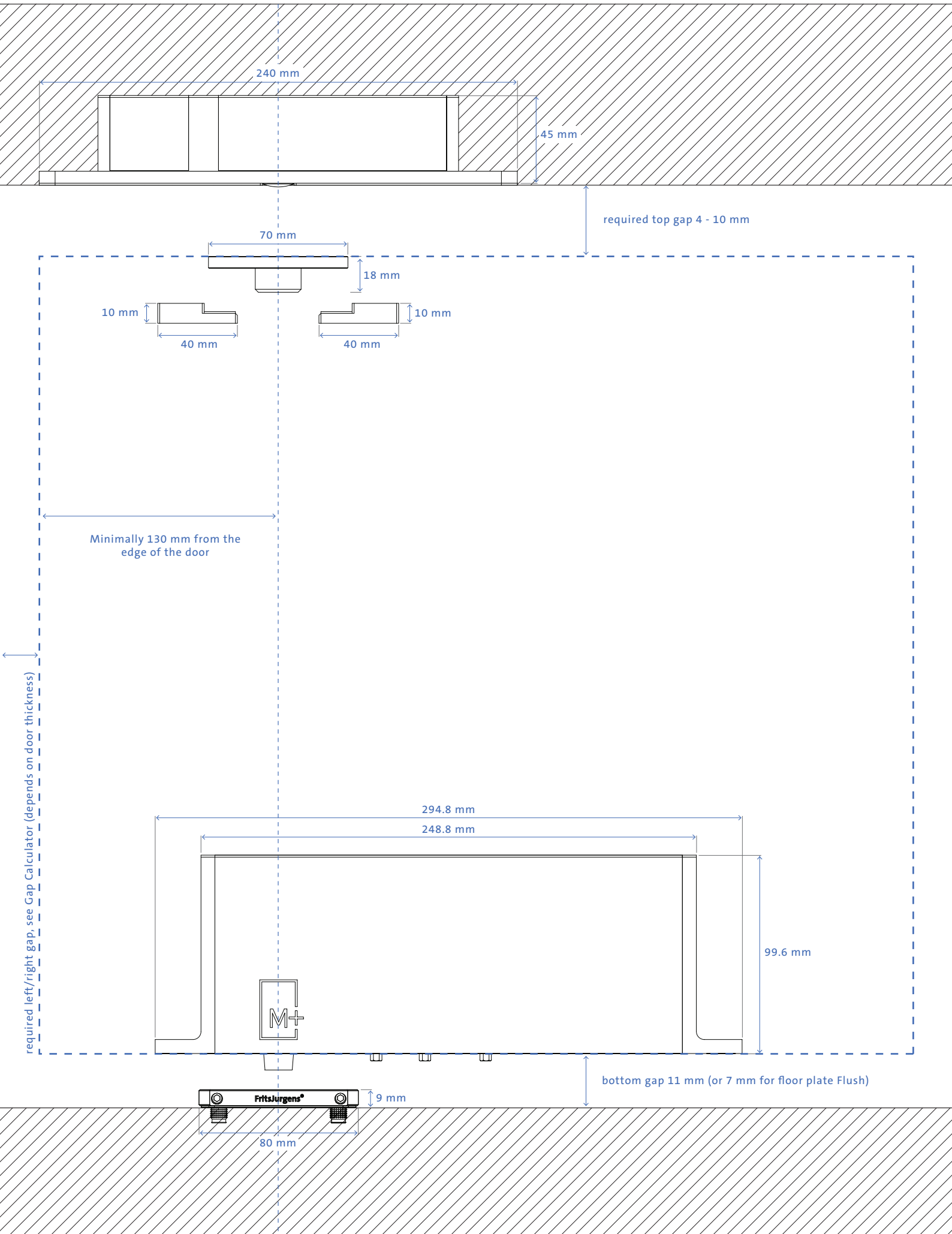


For wooden doors

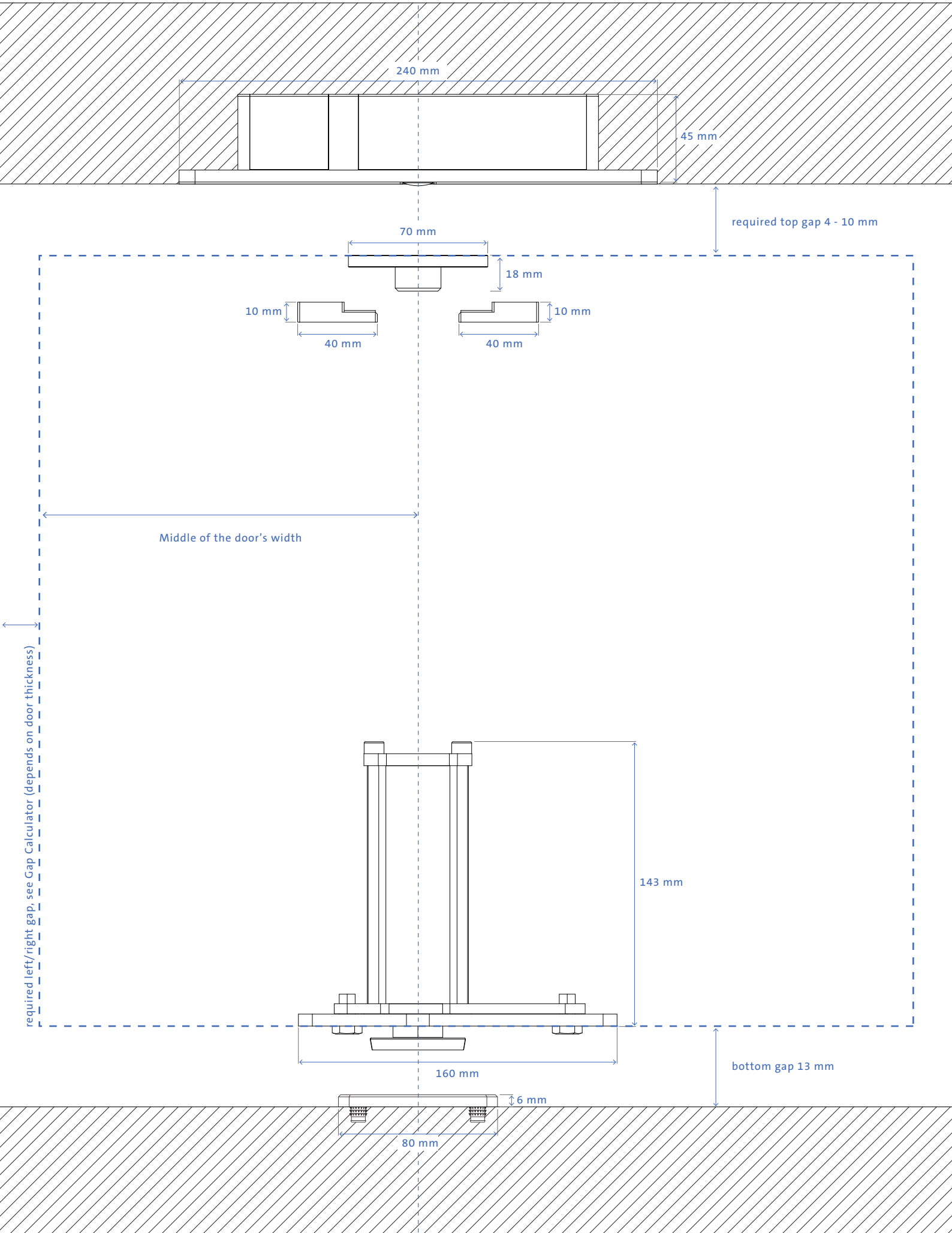


CONFIGURATIONS

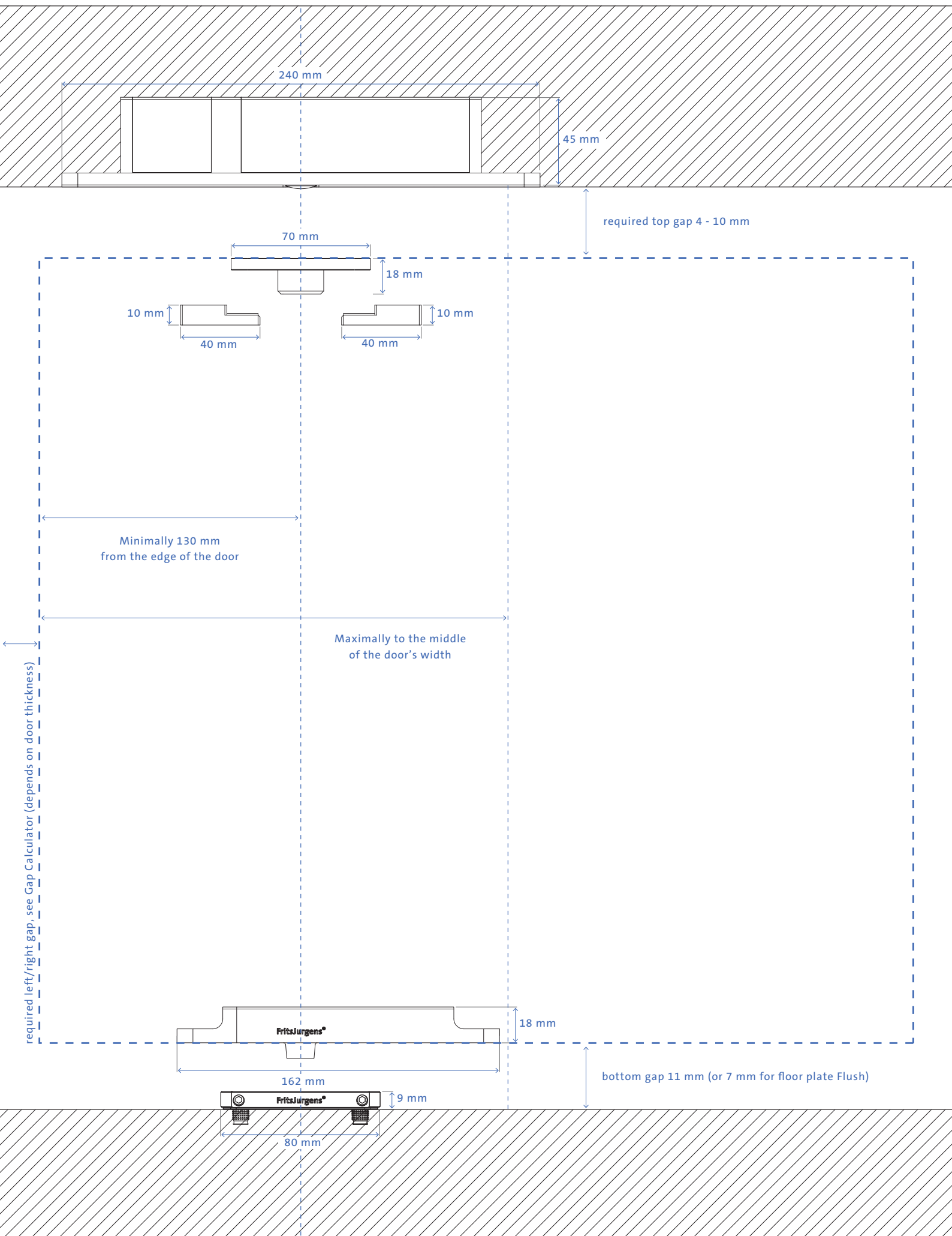
System M+ (Class A-E), pivot position ≥ 130 mm



System 3, pivot as middle position of door width (with TP-R)

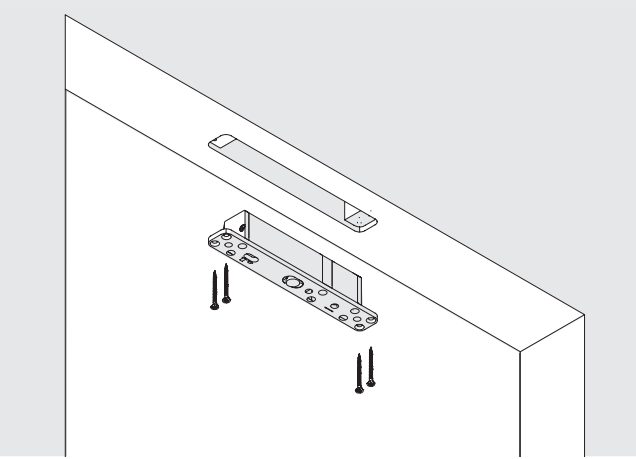


System One with TP-R (Class G), floor plate squared

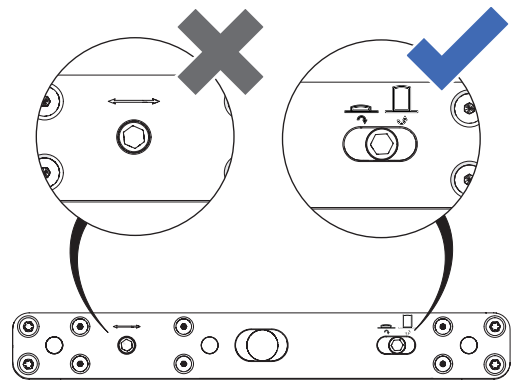


MOUNTING

1 Affix the Top pivot Reversed.

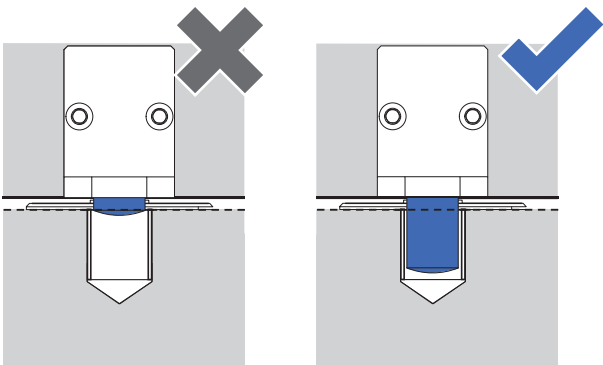
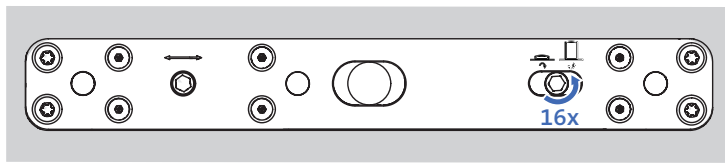
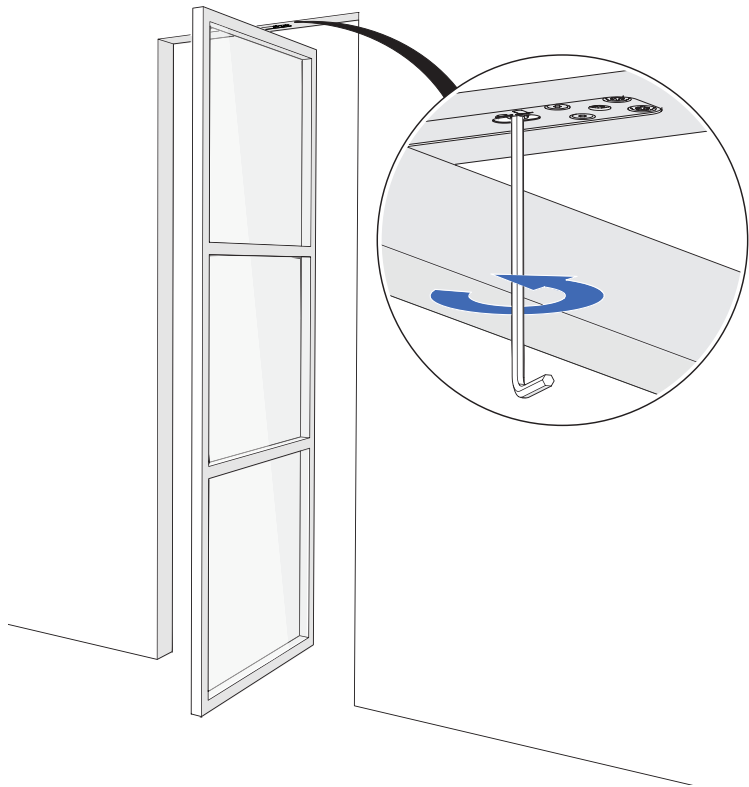


2 Identify the adjusting screw that extends the pivot.



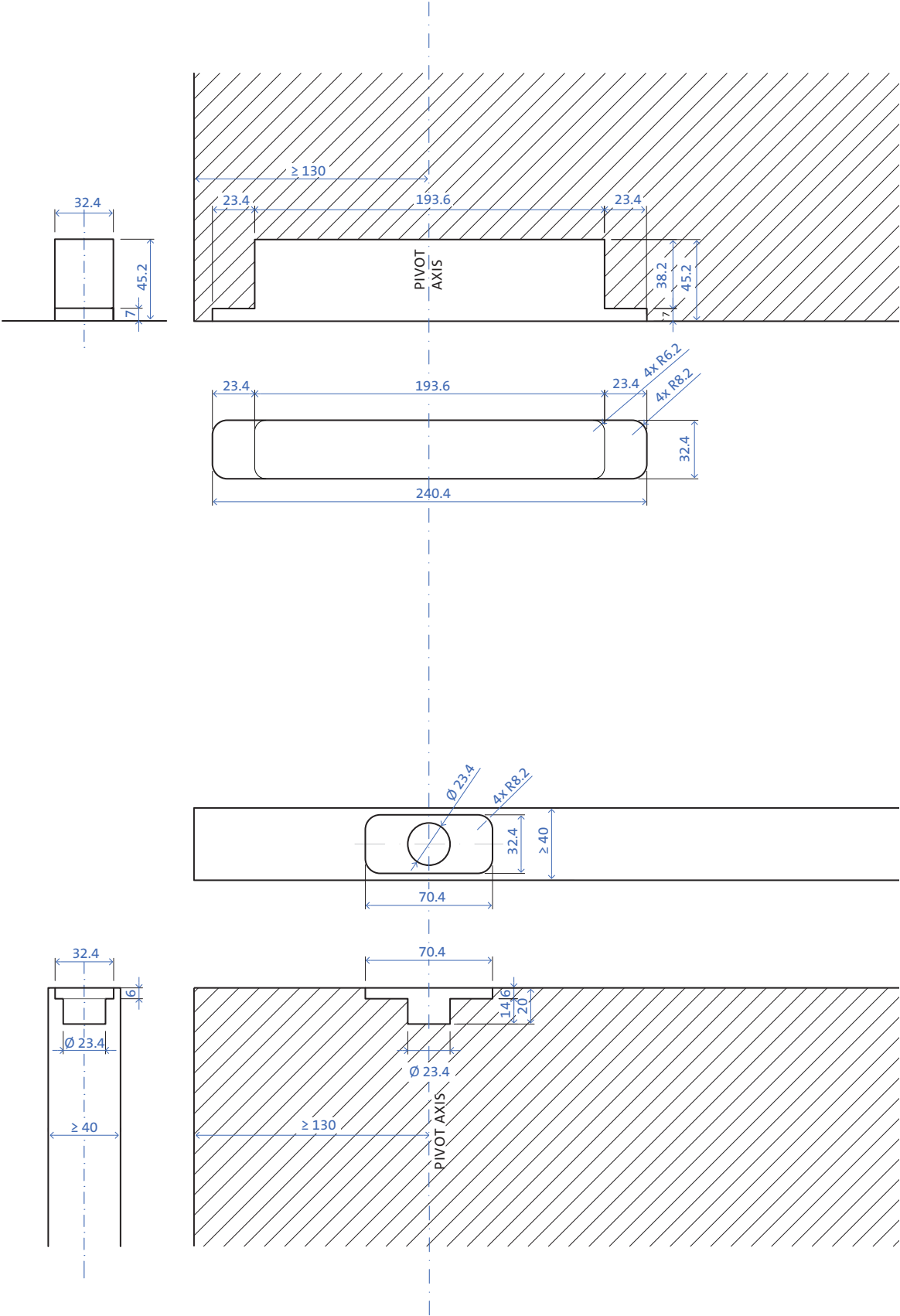
3 Position the door on the floor plate as shown in the main manual.

4 Extend the pivot with Allen key 5. Turn the Allen key 16 times to fully extend the pivot.



MILLING

PREPARING THE DOOR AND CEILING/TOP JAMB



FritsJurgens®

FRITSJURGENS INTERNATIONAL

A. Einsteinlaan 1

9615 TE Kolham

The Netherlands

+31 598 343 410

info@fritsjurgens.com

FRITSJURGENS ITALIA (REGIONAL SALES OFFICE)

Via Marsilio Ficino 22

50132 Firenze

Italy

+39 055 064 0290

info@fritsjurgens.com

FRITSJURGENS DUBAI BRANCH

DLC-OP-A2-4-0029

Dubai South

Dubai

United Arab Emirates

BO.tech.TP-R.EN

Copyright © FritsJurgens®

31-05-2023



www.fritsjurgens.com